



LITTLE MANSIONS LTD

Specialising in Lettings & Property Management



8 Abbey Close Meadowcroft Park Stafford ST17 4XY

£895 PCM

- Two bedroom House
- Excellent Condition
- Sitting Room
- Kitchen with cooker
- Bathroom with bath and shower
- Enclosed garden
- Parking for 2 cars
- EPC Rating: C
- Close to town
- Close to M6 jct 13



MODERN TOWN HOUSE IN POPULAR AREA with excellent access links to M6, town centre, Cannock, Rugeley and Lichfield. This property benefits from off road PARKING and ENCLOSED rear GARDEN. Briefly the property comprises of FITTED KITCHEN to the front with integrated oven, SITTING ROOM overlooking the rear garden with patio doors leading out, TWO GOOD SIZED BEDROOMS, and BATHROOM with shower over bath. Pets considered. Viewing is highly recommended.

Cash deposit of £1032 payable.

Disclaimer: Every effort has been made to ensure the description, details and photos are an accurate reflection of the let however there may be slight variances. Anything detrimental to yourself starting a tenancy must be confirmed at the application stage before referencing commences.

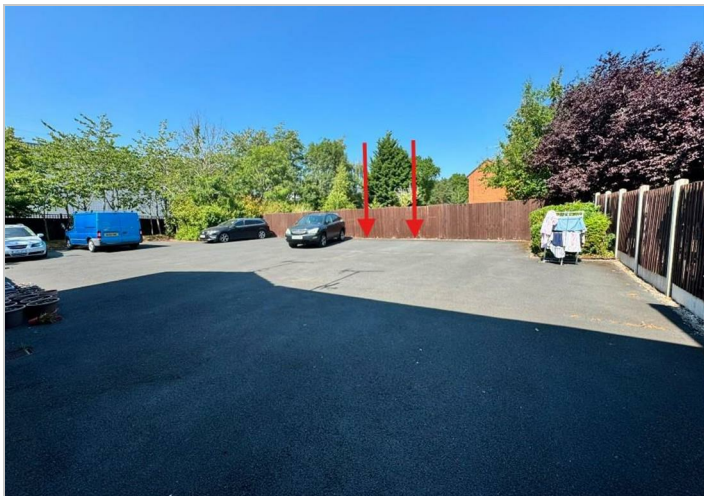
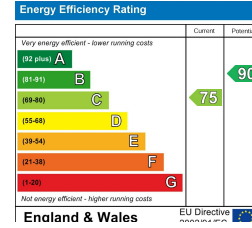
To book a viewing visit www.little-mansions.co.uk/property and book through our website to submit your details



Area Map



Energy Efficiency Graph



These particulars, whilst believed to be accurate are set out as a general outline only for guidance and do not constitute any part of an offer or contract. Intending purchasers should not rely on them as statements of representation of fact, but must satisfy themselves by inspection or otherwise as to their accuracy. No person in this firms employment has the authority to make or give any representation or warranty in respect of the property.

8 Eastgate Street Stafford, Staffordshire, ST16 2NQ
 Tel: 01785227881 Email: stafford@little-mansions.co.uk www.little-mansions.co.uk